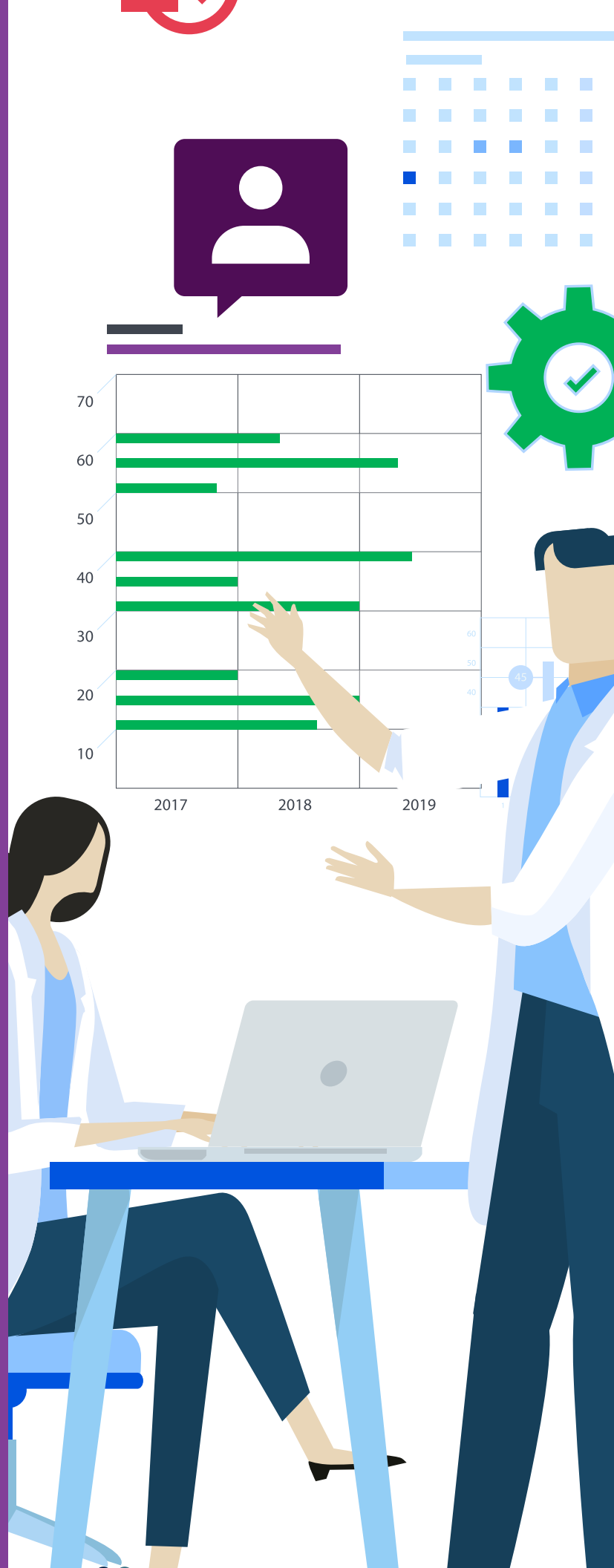


SVMIC
STRATEGIC
SERVICES

*Physician
Employment
Considerations*

SVMIC provides complimentary consultative discussions to assist in physician employment decisions



Physician Employment Considerations

The decision where to work is one of the most impactful choices a physician makes in their career. Work is a significant component of everyone's life, and we all deserve to be happy in a place where we spend so much time. The culture of the organization where a physician works will in many ways impact how they practice medicine. That culture can vary significantly based on the ownership and governance of the employer.

While each model has its own advantages, a physician must also carefully consider potential negatives in those models. **Knowing what you may be sacrificing is just as important as knowing what you will get.** Whether a physician is just starting their career or potentially looking to make a change, it may be one that is not easily undone. An informed decision made after careful consideration is essential.

What Do We Do?

PROS AND CONS

SVMIC offer sessions with our insurance and practice management consultants to help you assess the pros and cons of joining a physician owned group or selling or merging with a hospital, a larger practice, private equity group, or national consolidator.

TOOLS AND EDUCATION

We have a free online webinar and white paper explaining the different compensation models between hospitals and private practice and a webinar on considerations in an employment agreement.

We also offer a contract checklist to help you make sure the key elements are addressed.

NETWORKING AND DATA

We offer available industry data on compensation and productivity in those environments.

We help you network with other SVMIC-insured physicians like you who have made similar choices.

We will provide a side-by-side comparison of your malpractice insurance options.

How Do I Get Started?

The sooner you reach out, the sooner you can start your decision process. To access these complimentary resources, reach out to SVMIC's Medical Practice Services at ContactSVMIC@svmic.com or 800.342.2239.

